

FluoroPel Tracer: is a UV Tracer for FluoroPel Conformal Coatings

FluoroPel is a family of nano-coatings designed to protect against water and moisture related premature failure of devices. FluoroPel dries to a very thin film with excellent hydrophobic and oleophobic properties. FluoroPel-Tracer is an additive for FluoroPel 800 and 600 that facilitates UV light quality control inspection of coated parts.

Properties:

Appearance: Pale yellow to brown liquid

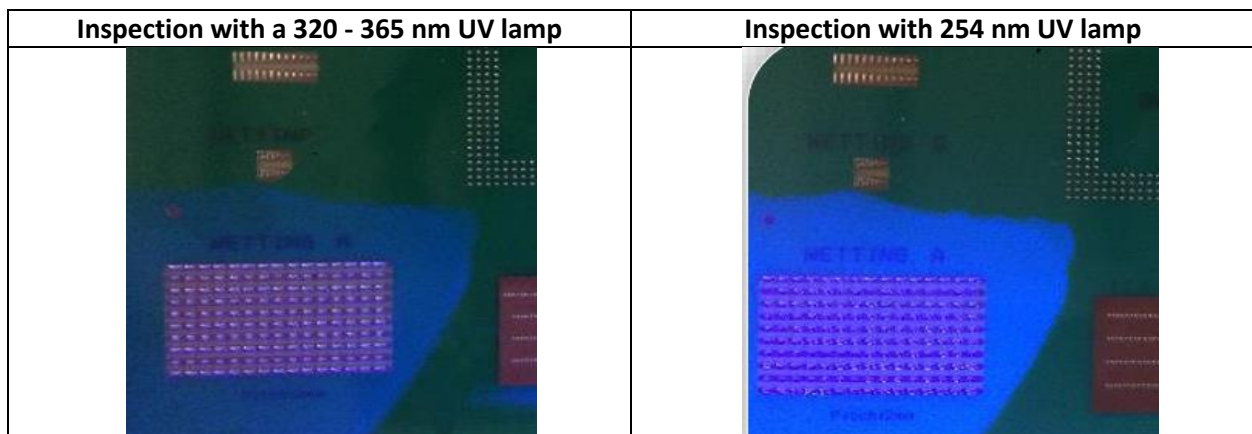
Specific gravity: 0.8

Solid content: 10%

Solubility: Organics solvents (FluoroSolvents at 1%)

Usage: 1% in FluoroPel (liquid-weight to liquid-weight)

Instructions: Dilute the FluoroPel 800 or 600 to the final use concentration (usually 0.2% or 2%). Add 1% FluoroPel-Tracer to ready-to-use FluoroPel (weight for weight; 5 grams to 500 grams). Stir mixture and either spray or dip devices. If there is any brown sediment, the FluoroPel-Tracer may need to be filtered with a coffee filter. Please see the Safety Data Sheet for further details regarding safe use of this product.



Copyright Cytonix LLC

The information in this document is believed to be correct on the date of issue. Judgments of the suitability of the information for the purchaser's purposes are the purchaser's responsibility. Although reasonable care has been taken in the preparation of this information, Cytonix extends no warranties, makes no representations, and assumes no responsibility as to the suitability of the information for the purchaser's application.

8000 Virginia Manor Rd, #130
Beltsville, MD 20705, USA
www.cytonix.com
emailbox@cytonix.com
301.470.6267